



LIBERTYGROVE @ KOTA SENTOSA

WWW.ELICA.COM.MY

LOCATION

Liberty Grove is strategically located close to airport in the up-and-coming area of Kota Sentosa. 20 minutes from the bustling heart of Kuching and close to the town's major arterial roads.

Because it is set back sufficiently from the road and is not overflowed by aircraft using Kuching Airport, Liberty Grove will always remain a peaceful and secluded community.

9 TOWERS
7, 9 & 12 STOREYS
8 UNITS PER FLOOR
22 UNITS PER ACRE

LIBERTY ONE, LIBERTY TWO, LIBERTY THREE & LIBERTY FIVE
COMPLETED WITH OP

LIBERTY SIX COMPLETED
Facing South West or North East
72 units @ 9 Storey
View of swimming pool and playground or greenery

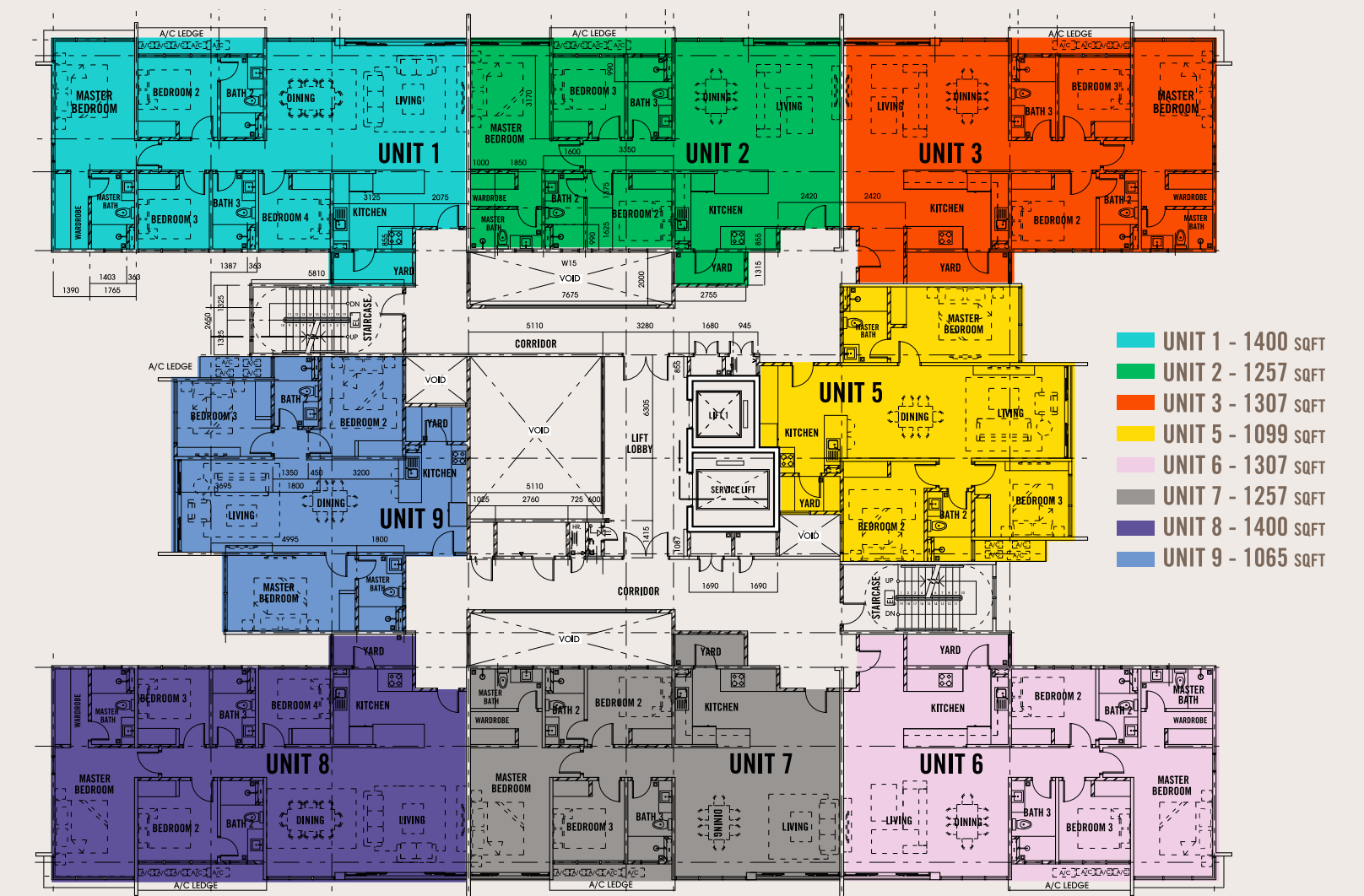
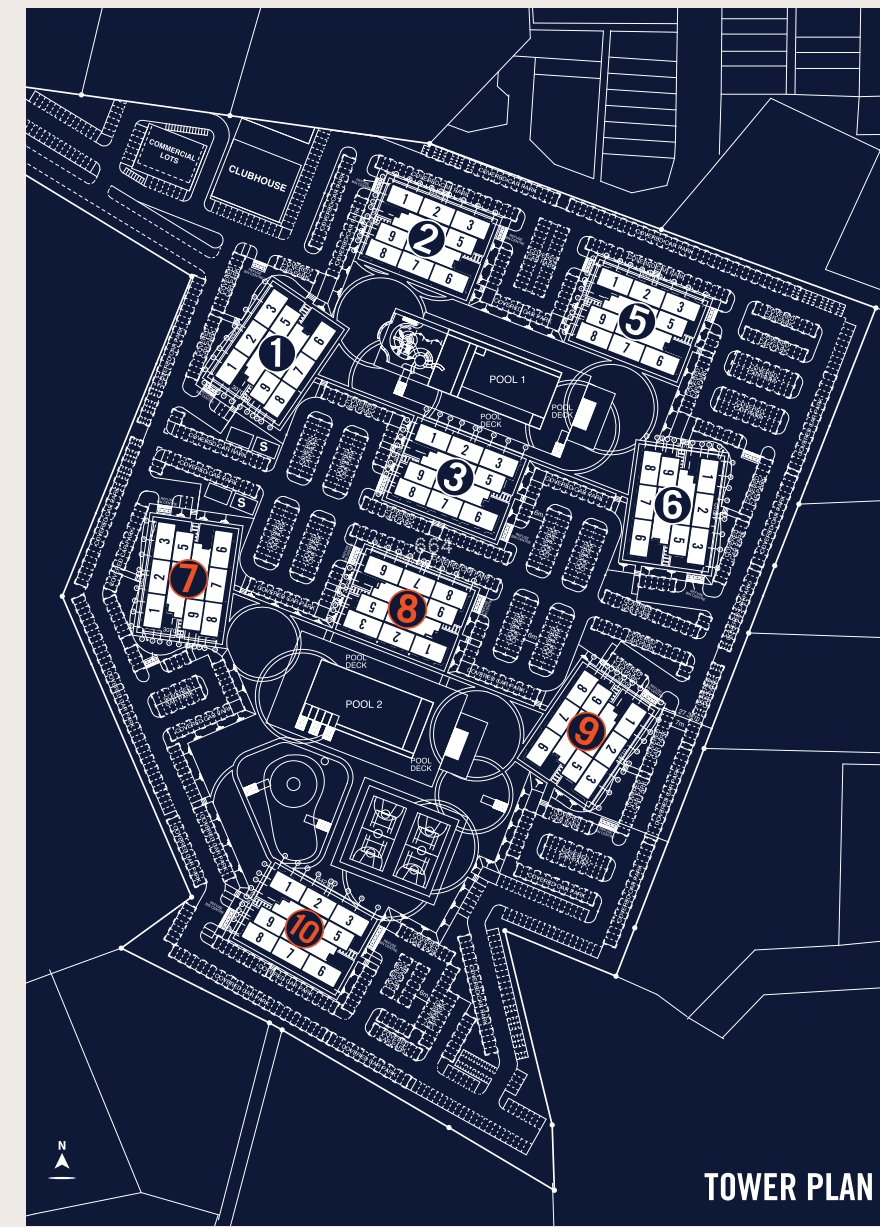
LIBERTY SEVEN
Facing to South East or North West
56 units @ 7 Storey
View of Kuching Central and Kota Sentosa or swimming pool, dry park, futsal & basketball court

LIBERTY EIGHT
Facing to South or North
72 units @ 9 Storey
View of swimming pool, dry park, futsal & basketball court or internal blocks

LIBERTY NINE
Facing to North West or South East
72 units @ 9 Storey
View of swimming pool, dry park, futsal & basketball court or greenery

LIBERTY TEN
Facing to North or South
96 units @ 12 Storey
View of swimming pool, dry park, futsal & basketball court or view of Kota Sentosa

Housing Development License No. L10564/KP/HD/01/2018/0024 Validity: 31 Oct 2018 - 21 Oct 2022
Advertisement and Sale Permit P0034/KP/HD/01/2018/0027 Validity: 9 Nov 2018 - 21 Oct 2022 SPA
Approved Plan No. P11/079-15, Project Location: Lot 604, Block 17, KUCID, Kuching Division, Mln
Selling Price: RM 174,600.00 Max Selling Price: RM 168,400.00 Approved Authority: Majlis Perbandaran
Padawan, Council Ref No. P/MC/ES/BA-45/17 & P/MC/ES/BA-44/17. No. of units: 408, 388 sqft - 18 units,
1000 sqft - 67 units, 1099 sqft - 67 units, 1257 sqft - 152 units, 1307 sqft - 152 units, 1400 sqft - 152 units,
1400 sqft - 152 units. Disclaimer: All statements, drawings, images and illustrations are artist's
impression only. The information contained herein is subject to change without notification as may
be required by the relevant authorities or the developer and cannot form part of any offer or contract.
While every reasonable care has been taken in preparing this booklet, the developer cannot be
held responsible for any inaccuracy.



ELICA, THE AWARD WINNING TEAM BEHIND THE REPUBLIC NOW BRINGS YOU THE OPPORTUNITY TO PARTICIPATE IN THEIR LATEST DEVELOPMENT

Welcome to Liberty Grove, Elica's exciting new development in Kota Sentosa defining the new benchmark in high quality, affordable apartment living. Conceived as a private gated community, over twenty seven acres our development consists of a low-density mix of three and four bedroom apartments contained within nine medium-rise towers. Set within landscaped gardens, Liberty Grove offers outstanding value for money and is the perfect choice for first time home buyers and investors.

DEVELOPER PROVISIONS
Kitchen cabinets | Air-conditioners | Shower Screen | Centralised Hot Water System | Open Wardrobes | High ceilings
LED Lightings | 500 x 500 Floor Tiles | Vinyl Floor to Bedrooms | Curtains*
*Applicable to specific units only

FINAL PHASE UPGRADED FEATURES
New Kitchen design with granite top | Vanity top at Bathrooms | 600 x 600 Floor Tiles | Wardrobes

4 DESIGN THEMES TO CHOOSE FROM
Hassle free, fully furnished home with 2 sheltered carspaces and a Make Over Guys interior design package including furnitures, electrical appliances, wallpapers, curtains, soft touches for the unit, decorations etc.

EXTRA
Free Legal fee & Stamp Duty for Sale & Purchase Agreement | Free Legal fee & Stamp Duty for Loan Agreement
2 Sheltered Car Spaces

ANY ENQUIRIES, PLEASE CONTACT
Suk Ping 016 888 7959 Shirley Sia 016 5766 757 Carissa Goh 019 828 1777
Ivan Nyam 017 811 8867 Terence Lo 010 972 0501 www.elica.com.my



RETRO

WOOD & TEAL

PRIMARY ELEMENTS | Heavy dark wood tones, turquoise tones and gold as highlights

MATERIALS FOR ELEMENTS | Wallpaper & painting

LOOSE FURNITURE | Combination of heavy wood tones, brown & black

SOFT TOUCHES | Combination of neutral colours



CALM

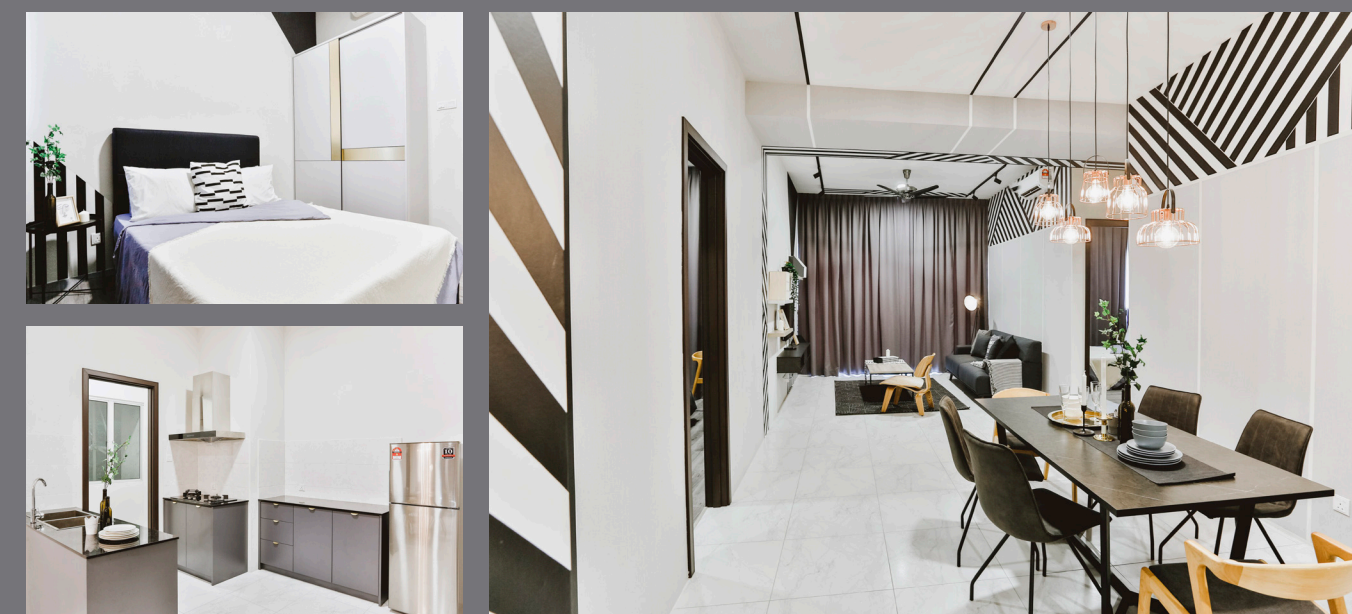
OLIVE & WOOD

PRIMARY ELEMENTS | Olive green and brown wood tones

MATERIALS FOR ELEMENTS | Wallpaper & painting

LOOSE FURNITURE | Combination of brown wood tones, light grey and black colour

SOFT TOUCHES | Combination of neutral colours



GEOMETRY

BLACK & WHITE

PRIMARY ELEMENTS | White & black, with gold as highlight

MATERIALS FOR ELEMENTS | Wallpaper & painting

LOOSE FURNITURE | Combination of white and black, and natural wood

SOFT TOUCHES | Combination of white and grey with a touch of greenery



AMBER

CREAM & CORAL

PRIMARY ELEMENTS | Combination of cream and coral colour, with black as highlight

MATERIALS FOR ELEMENTS | Painting & wallpaper

LOOSE FURNITURE | Combination of white & grey, and natural wood

SOFT TOUCHES | Combination of pastel colours